



STRUCTURE OF THE IIHF

STRUCTURE OF THE IIHF AND THE IIHF SPORT DEVELOPMENT PROGRAM

This chapter explains the structure of the International Ice Hockey Federation and the five components of the IIHF Sport Development Program.

The IIHF, through the IIHF Sport Development Program, is working together with its member National Associations in a partnership to develop the game of hockey around the world. The IIHF Coach Development Program focuses on developing hockey coaches so that they can educate and influence the athletes that they work with in a positive way.

Chapter Overview:

- The structure of the IIHF
- The objectives of the IIHF Sport Development Program
- The IIHF Coach Development Program

Structure of the IIHF

Founded in 1908, the International Ice Hockey Federation is the world governing body for the sport of ice hockey. It is comprised of 65* member National Associations from all around the world.

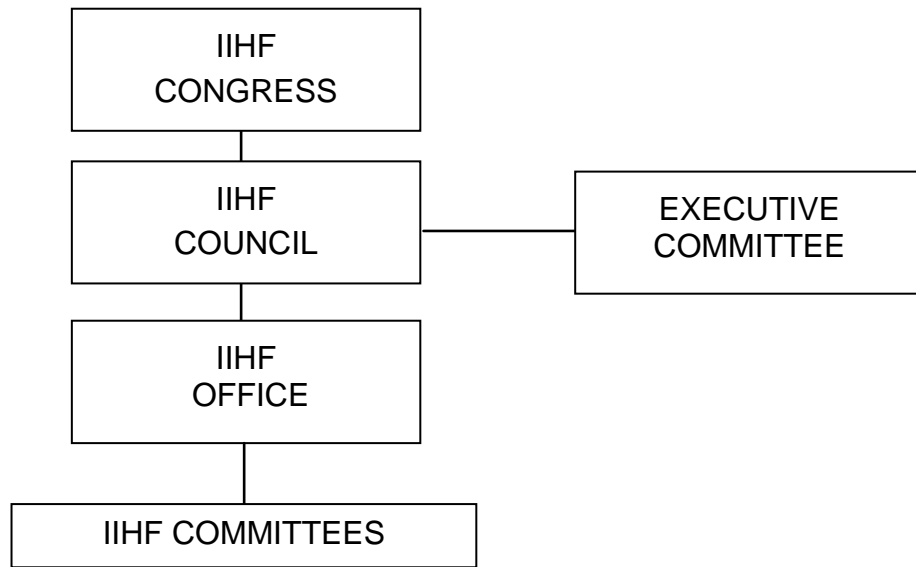
The IIHF is recognized by the International Olympic Committee (IOC) as the only governing body for international ice hockey.

The objectives of the IIHF are:

- To govern and control international ice hockey
- To operate in an organized manner for the good order of the sport
- Organisation of World Championships annually
- To develop and promote ice hockey throughout the world
- To promote friendly relations among the member National Associations
- Develop educational programs for all areas of ice hockey
- Offer education and development programs to its member National Associations
- Assist members National Associations in their ice hockey education and development programs

* as of May 2007

IIHF ORGANISATION CHART



IIHF Organisation Chart Description

IIHF Congress:

The International Ice Hockey Federation Congress is the final decision making body within the IIHF. The responsible of Congress is to review debate and discuss the policies, guidelines and proposals for the operation of IIHF sanctioned activities. The member National Associations are represented at this level and meet twice a season - once at the Annual Congress in early May and again at the Semi-Annual Congress in late September.

IIHF Council:

The IIHF Council is the body that is elected by the IIHF Congress to collectively formulate and develop the policies, plans, proposals and guidelines for the successful organisation and operation of IIHF sanctioned activities. Such activities are targeted at the promotion, education and world-wide growth of ice hockey. The Council is responsible to manage the activities on behalf of the member National Associations.

IIHF Executive and Finance Committee:

The IIHF Executive and Finance Committee are under the chairmanship of the IIHF President and are composed of the three IIHF Vice-Presidents, the Treasurer and the General Secretary. This committee is responsible for the long range operational planning and financial management of the IIHF and its activities. This committee reports to the IIHF Council and is responsible for proposing plans and recommendations for the continued growth of the sport and the Federation.



IIHF Office:

The IIHF Office is responsible for the day-to-day operation of all IIHF initiatives, sanctioned activities and services for IIHF member National Associations. The office is staffed by full time employees responsible for the initiation and implementation of the Federation activities. The staff is under the supervision of the General Secretary who is responsible to the IIHF Executive Committee for managing the daily operations of the Federation.

IIHF Committees:

The IIHF Committees are appointed working bodies established and mandated by the IIHF Council to perform the specialized work of the Council. The committees are under the control and supervision of an IIHF Council member and work as a recommendation body responsible for preparing the necessary detailed proposals, plans, guidelines, resources and recommendations to Council for consideration in their respective field of expertise.

IIHF Office Structure

The IIHF office is the administrative hub for the operation of all IIHF activities. It is through this office that all sanctioned international competitions, programs and activities are facilitated. Under the direction of the IIHF Council and managed by the General Secretary, the IIHF office operates within six departments:

1. Presidents Office
2. Administration
3. Event
4. Communications
5. Marketing
6. Sport

Each department is responsible for providing the necessary administrative service to the IIHF Council, its member committees and to all member National Associations regarding their particular programs and initiatives.

The IIHF office acts as a central clearing house for all questions on the operation of international hockey while performing as an independent and neutral site for resolving international hockey difficulties.

IIHF Sport Development Program

The IIHF Sport Development Program which was initiated in 1997 co-operates with member National Associations in a partnership to develop and promote hockey world wide. Within this partnership the IIHF Sport Development Program provides National Associations with the resources to organize and operate the educational programs within their country,

However, the IIHF do not operate development within nations but aim to assist a country with its development programs. Ultimately it is the National Association's responsibility to provide the highest quality of instruction, training and supervision in order to operate their own programs and educate their own membership.

Philosophy, Mission Statement, Vision

Philosophy

The IIHF and the National Associations work in a partnership to enhance the game of ice hockey globally.

Our interest is in developing the game of ice hockey globally with internationally compiled resources of coaching, player, officiating, medical and administrator material. This educational material is designed to be used as the core development program for any IIHF member National Association or as a supplement to an existing program, already being operated.

Mission Statement

Our challenge is to support each member National Association in the growth and development of hockey within their country in order to foster and develop the game of hockey around the world.

We will assist National Associations to educate their own hockey membership.

In our quest to develop players, coaches, administrators and game officials our aim is also to develop life skills in the youth of the world through the game of ice hockey.

Vision

Our aim is to compile an international library of coaching, player, administrator and officiating educational materials, including books and videos which have been developed by the IIHF and its member National Associations.

We will discuss each country's requirements and provide them with the best assistance possible to develop the game within their own country's culture and hockey situation.

The five educational programs listed below make up the IIHF Sport Development Program.

1. IIHF Coach Development Program
2. IIHF Official's Development Program
3. IIHF Junior Hockey Development Program (including Player Development)
4. IIHF Medical Development Program
5. IIHF Administrator Development Program



IIHF SPORT DEVELOPMENT ORGANISATION CHART



IIHF Coach Development Program

IIHF Coaching Committee

The IIHF Coaching Committee is responsible for developing the strategies, plans and overseeing the operation of the IIHF Coach Development Program. This includes course curriculum, contents and the resources that sand the various training seminars. This educational program is designed to follow the partnership strategy whereby the program operates as a joint venture between the International Ice Hockey Federation and National Associations. That is to say that, when a National Association has committed time, people and resources, the IIHF will reciprocate.

IIHF Office

The IIHF office will manage the daily operations of the IIHF Coach Development Program from the office in Zurich, Switzerland.

IIHF Instructor

The IIHF will recruit and train IIHF Instructors.

Their role is to:

- Assist the National Association Instructors in conducting coaching clinics within their country
- Conduct on IIHF National Association Coaching Instructor Seminars
- Compile information from National Association Instructors and make recommendations to the IIHF
- Be a resource person for the IIHF Coaching Program

National Association Coaching Director

Coaching Directors are appointed by the National Association following the "Recommended Selection Criteria for National Association Head Instructors

Their role is to:

- Responsible for Coach and Player Development, within their National Association
- This includes program structure and operation
- Actively involved in the promotion and distribution of information relating to Coach and Player Development
- Assist in conducting coaching clinics within their country
- Be available to attend the yearly IIHF International Coaching Symposium

National Association Coaching Instructor and Learn to Play Instructor

These National Association Instructors should be appointed by the National Association Board and their Coaching Director.

Their role is:

- Conduct coaching and Learn to Play clinics within their country for their coaches
- Attend the IIHF National Association Coaching Instructor Seminar and Learn to Play Instructor Seminar which will be conducted on a bi-yearly basis.
- Remain as a resource person for the National Association Coaches

National Association Coaches

The National Association coaches will be selected by the National Association.

Their role is:

- Attend coaching clinics which are organized by the National Association.
- The clinics will be conducted by the National Association Instructors who will at times be assisted by an IIHF Instructor.

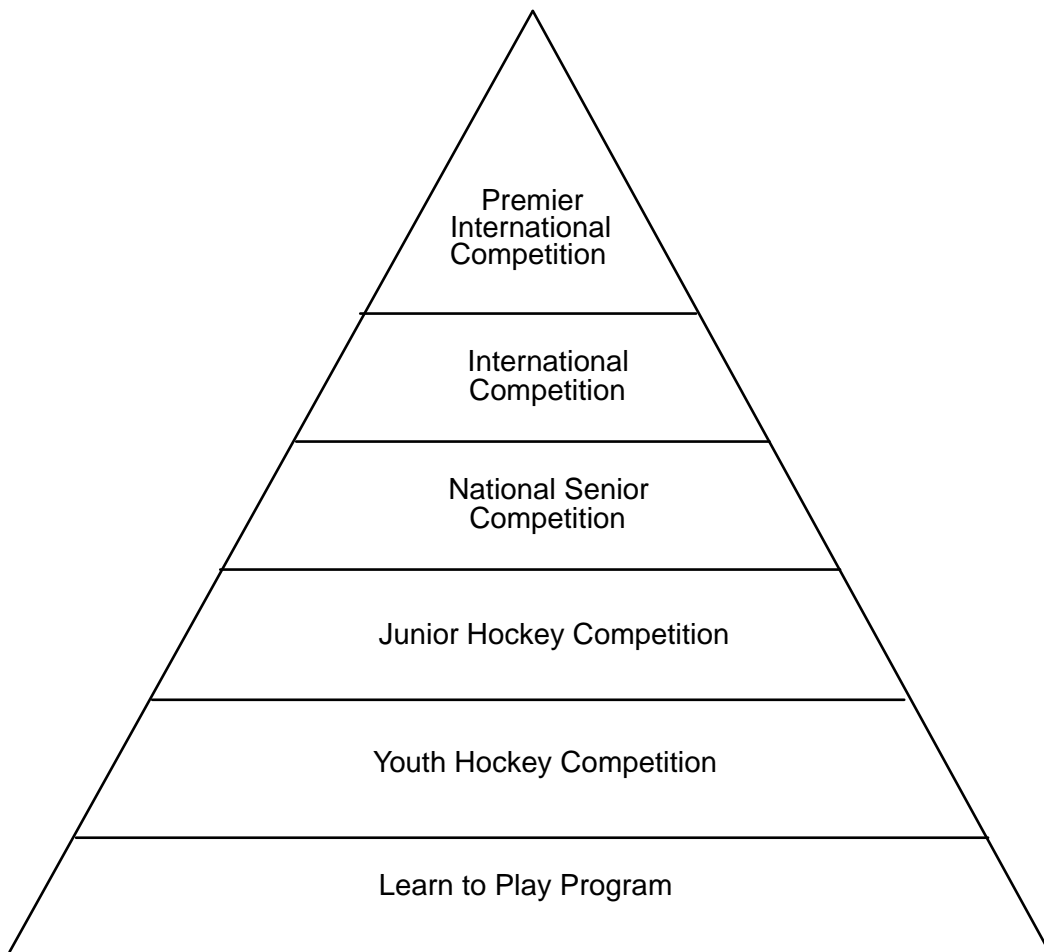
Coaches play a very important role in the growth and development of hockey in their country.

Where hockey has its foundation in the club system, it is important that coaches are provided with the best possible resources to ensure that the game is played in a safe and proper environment, as defined by the playing rules.

IIHF Classifications of Development and Competition

The International Ice Hockey Federation has identified five classifications of development and competition in hockey being played around the world. These classifications are:

1. Learn to Play Program
2. Youth Hockey Competition
3. Junior Hockey Competition
4. National Senior Competition
5. International Competition
6. Premier International Competition



Description of the Classifications of Development and Competition

In order to understand the relationship between the classifications of development and competition to the levels of the IIHF Coach Development Program, it is important to understand what each classification deals with.

Within each of these classifications, each individual National Association will set up age groups, sub-levels of classifications and the criteria for each age group to best fit their unique hockey situation.

Following are brief descriptions of the classifications and suggested contents and objectives as to what they could offer their participants.

Learn to Play Program

The Learn to Play Program is the Entry or beginners level of hockey. This is where the foundation of all programs and development. If a youngster is introduced to the game in a positive, fun-filled manner, then, not only will they enjoy the initial experience, they will want to continue to play hockey. With this foundation they will continue to enjoy playing the game for many years. The emphasis is on ENJOYMENT and SKILL DEVELOPMENT through FUN GAMES. This classification should include all entry level-players to Under 10 years of age but also includes beginners up to 16 years of age.

Objectives:

- Have fun
- Stimulate interest in hockey and a desire to continue participation
- Develop basic hockey skills
- Obtain a sense of achievement
- Introduce players to the concepts of developing Life Skills such as COOPERATION, SPORTSMANSHIP
- Encourage initiative
- Provide a game to fit the needs of the participants
- Allow players equal ice time
- De-emphasize the importance of winning
- Assist in an individual's physical development
- Help the players social development

Youth Hockey Competition

Youth hockey is where the development and learning of the Learn to Play Program is continued. It is also the first level of competition and where the leadership and initiative of the National Association is very important to have a successful program. All players begin their hockey playing career here and emphasis should be on ENJOYMENT and SKILL DEVELOPMENT. This classification should include players up to 16 years of age.

Objectives:

- Have fun
- Continued develop basic hockey skills
- Introduce individual and team tactics
- Obtain a sense of achievement
- Promote physical fitness
- Introduce players to the concepts of developing Life Skills such as COOPERATION, SPORTSMANSHIP, and LEADERSHIP
- Encourage initiative
- Provide a game to fit the needs of the participants

- Allow players equal ice time
- De-emphasize the importance of winning
- Assist in an individual's physical development
- Create a social environment
- Allow and encourage an individual to participate freely in other sports and activities
- Encourage the oldest youth hockey players to officiate for the younger age groups

Junior Hockey Competition

After having had a positive experience in youth hockey and developed the skill base necessary, as well as basic individual and team tactics, the players will move into junior hockey competition. During these very important formative years of development in a hockey player, and more importantly in a young person, it is very important that the National Association take positive and progressive measures to ensure that everyone involved has a positive experience in all aspects. This classification should include players up to 20 years of age.

Objectives

- Have fun
- Refine basic hockey skills
- Refine individual and team tactics
- Promote physical fitness
- Continuing development of Life Skills such as COOPERATION, SPORTSMANSHIP, and LEADERSHIP
- Provide a game to fit the needs of the participants
- Assist in an individual's physical development
- Create a socially supportive environment
- Encourage the participation in other sports and activities
- Encourage players to officiate in youth hockey competition

National Senior Competition

Within this level of competition is the "elite" or "first" division as well as other sub levels of senior competition.

At the top level, males and females continue to develop and perfect their technical skill and playing tactics. This is the highest level within the country.

Objectives

- Competition
- Further refine basic hockey skills, individual and team tactics
- Role model function for the team, club and association
- Promote physical fitness
- Continuing development of the Life Skills of COOPERATION, SPORTSMANSHIP and LEADERSHIP
- Assist in an individual's physical development
- Create a social environment
- Achieve a degree of excellence according to the player's interest
- Provide an opportunity to progress to a higher level of competition international competition
- Recruit retired players into Coaching and officiating



International Competition

This classification encompasses the international competitions from youth hockey to senior hockey, excluding the Olympic Winter Games, World Senior Championship and the World Junior Championship

Objectives

- Competition
- Provide an opportunity for the players who have dedicated themselves to the sport to play at the highest level open to them
- Further refine individual and team tactics
- Develop Role Models for the National Association and the sport of ice hockey
- Provide an opportunity to progress to a higher level of competition
- Recruit retired players into Coaching and officiating

Premier International Competition

This level of competition provides the players who have special talents a chance to represent their country at the Olympic Winter Games, IIHF World Senior Championship and IIHF World Junior Championship

Objectives

- Competition
- Provide an opportunity for the players who have dedicated themselves to the sport to play at the highest level in the world
- Develop Role Models for the National Association and the sport of ice hockey
- Recruit retired players into Coaching and officiating

IIHF Coach Development Program

As outlined earlier in the section the guidance for the IIHF Coach Development Program are given by the IIHF Coaching Committee. Each National Association is encouraged to use the IIHF Coach Development Program resource materials either as the core development program for their National Association or as a supplement to an existing program for education of their coaches.

The objectives of the IIHF Coach Development Program are to:

- Co-operate with National Associations in a partnership to educate the coaches within their country
- Provide coaches from around the world with the most current coaching information and technology
- Take a pro-active role in solving the coaching challenges in modern day hockey
- Encourage coaches to provide a positive, fun and healthy atmosphere for the growth and development of hockey players

IIHF Coach Development Program Overview

Within the IIHF Coach Development Program there are four educational levels; Learn to Play, Level I, Level II and Level III. All these levels have manuals that contain topics in the eleven subject areas: Introduction, Leadership, Teaching/Learning, Organization and Planning, Communication, Physiology, Psychology, Technical, Tactical, Safety and Risk Management and Rules and Regulations.

Coach Certification

The IIHF do not operate development within nations but aim to assist them with their development programs.

Ultimately it is the National Association's responsibility to provide the highest quality of education and training programs for their own people.

As such, certification is the responsibility of each individual member National Association.

The IIHF does not certify coaches or provide Certification for any coaching courses.



IIHF Coach Development Program Overview

SECTION	INTRODUCTION TO COACHING Subjects	LEVEL I Subjects	LEVEL II Subjects	LEVEL III Subjects
INTRODUCTION	Introduction Structure of the IIHF Sport Development Program	Introduction Structure of the IIHF Sport Development Program	Introduction Structure of the IIHF Sport Development Program	Introduction Structure of the IIHF Sport Development Program
LEADERSHIP	The Coaching Basics	Role of the Coach	Demonstrate Leadership Bench Management	The Athlete in Today's Society Game Day Organisation
COMMUNICATION		Communication Principles	Communication in a Hockey Environment	Team Building
TEACHING/LEARNING	Teaching Skills Cross-ice Hockey and Small-Area Games	Teaching Techniques I	Skill Analysis Teaching Techniques II	Skill Analysis
ORGANISATION AND PLANNING	On-ice Organisation The Learn to Play Program	Practice Planning	Yearly Planning I	Yearly Planning II Player Selection Statistics
PHYSIOLOGY			Growth and Development How the Body Works Developing Fitness	Growth and Development Hockey Specific Training Nutrition and Performance
PSYCHOLOGY			Building Self Esteem	Recognise and Manage Stress Motivation
TECHNICAL		Skating Puck Handling Passing and Receiving Shooting Checking Drills - Technical	Goalkeeping Technical Drills - Goalkeeping	
TACTICAL		Introduction to Individual Tactics Individual Offensive Tactics I Individual Defensive Tactics I Glossary -Tactical	Developing Hockey Sense Introduction to Individual Tactics II Individual Offensive Tactics II Individual Defensive Tactics II Introduction to Team Tactics Offensive Team Tactics and Principles Defensive Team Tactics and Principles Glossary – Tactical	Goalkeeping Tactical Developing Hockey Sense Team Play Systems Introduction to Special Situations Power Play Penalty Killing Face-offs Glossary - Tactical
ATHLETE SAFETY AND PROTECTION		Safety and Risk Management Abuse and Harassment	Abuse and Harrassment	Recognize and Manage Injuries Abuse and Harassment
RULES	Rules for Cross-ice	Rules		Rules

Following are the recommend Agendas for all four Levels of the IIHF Coaching Development Program that the IIHF Coaching Committee suggests member National Associations use.

Alternatively the National Associations can adjust the program to suit their needs or requirements for the certification of their program

INTRODUCTION TO COACH TOPICS AND TIMINGS AGENDA

CLASSROOM TOPICS	MINUTES
Introduction	15
Structure of the IIHF Sport Development Program	30
Ice Breaker	30
Learn to Play & Cross-ice Hockey – Details and Benefits	45
Teaching Skills	60
Ice Session – run by IIHF Instructors	75
Ice Session – Feedback	30
LTP Practice Organization	45
The LTP Coach	60
Planning for Sunday Practice	30
Pre-Ice Meeting at Arena	30
Ice Session – organised by coaches	60
Ice Session – Feedback	15
Planning for Jamboree	60
Ice Session Jamboree for Players	60
Jamboree Feedback	30
Future Program Planning	30
Total Hours	13 Hours



LEVEL I TOPICS AND TIMINGS AGENDA

CLASSROOM TOPICS	MINUTES
Introduction	30
Structure of the IIHF Sport Development Program	30
Ice Breaker	30
Role of the Coach	90
Teaching Techniques including Learning through Play	60
Practice Planning	60
Communication Principles	60
Skating	60
Puck Handling	30
Passing and Receiving	30
Shooting	30
Checking Skills	60
Individual Tactics	90
Risk Management	60
Athlete Protection	60
Rules	30
ON-ICE TOPICS	
Skating Skills	30
Puck Control Skills	30
Checking Skills	30
Learn through Play	30
Total Hours	15 Hours



LEVEL II CLINIC TOPICS AND TIMINGS AGENDA

CLASSROOM TOPICS	MINUTES
Introduction	30
Structure of Sport Development Program	30
Ice Breaker	30
Demonstrate Leadership	60
Bench Management	60
Teaching Techniques Part 2	60
Skill Analysis	60
Game Situation Roles	60
Yearly Planning Basics	60
Communication in the Hockey Environment	60
Growth and Development	60
Physical Preparation	60
Developing Fitness	60
Building Self Esteem	60
Individual Offensive and Defensive Tactics II	90
Goalkeeping Technical	90
Offensive Team Tactics and Principles	60
Defensive Team Tactics and Principles	60
ON-ICE TOPICS	
Individual Tactics	45
Team Tactics and Principles	45
Goalkeeping	30
Total Hours	18 Hours



**LEVEL III CLINIC
TOPICS AND TIMINGS
AGENDA**

CLASSROOM TOPICS	MINUTES
Introduction	30
Structure of the IIHF Sport Development Program	30
Ice Breaker	30
Athlete in Today's Society	60
Game Day Organisation	60
Athlete Safety and Protection	120
Skill Analysis Part 2	60
Developing Hockey Sense	90
Yearly Planning	90
Player Selection	60
Statistics	60
Team Building	90
Growth and Development	60
Hockey Specific Training	120
Nutrition and Performance	60
Recognize and Manage Stress	60
Motivate Players	60
Goaltending Tactical	90
Team Play Systems	90
Power Play	60
Penalty Killing	60
Face-offs	30
Recognize and Manage Injuries	90
Rules	60
ON-ICE TOPICS	
Team Play Systems	60
Developing Hockey Sense	60
Power Play and Penalty Killing	60
Goalkeeping	60
Total Hours	32 Hours